

Model events Påskeløb 2022

English

When: Controls will be in the forest between 09.00 and 17.00, Tuesday 12th April (Silkeborg Vesterskov) and Wednesday 13th April (Siim Skov, Ry).

How to get a map: 2 options

1. Print your own map (recommended): download the course from Påskeløbet's website. In courses with map change both part 1 and 2 are located in the same file.
2. Order a print (if necessary): send your request to giacomo.frattari@gmail.com before 20.00 on Thursday 7. April. Collect the print at Silkeborg Orienteringsklubs klubhus (Vejløvej 7b, 8600 Silkeborg - <https://goo.gl/maps/NDWAt0EjDS15z3QB7>) on Monday 11th April between 18.00 and 20.00

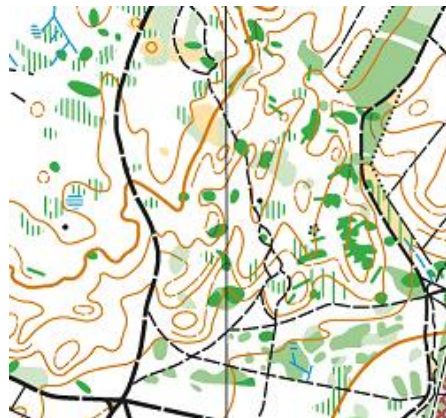
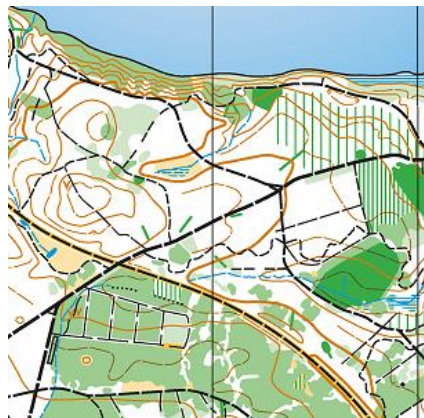
Payment: 50 kr/7 euro for each course, 3 payment options:

1. Pay by mobilepay to 68 85 58
2. Pay by cash at Silkeborg Orienteringsklubs klubhus (Vejløvej 7b, 8600 Silkeborg - <https://goo.gl/maps/NDWAt0EjDS15z3QB7>) on Monday 11th April between 18.00 and 20.00
3. Pay by cash at the "kiosk" on race days

Supplementary: Self-service, no staff on Tuesday nor Wednesday.

Tuesday 12th april 2022 – Silkeborg Vesterskov – Welcome to Silkeborgskovene

Slightly hilly to hilly terrain, varied runnability. Large areas of open deciduous and pine forest, as well as areas with lower runnability and sight. Extensive path-system with broad forest roads, narrow rides and mountain bike tracks. Alternating precision orienteering and route choice legs, the perfect model event for the long distance. Start and finish by the beautiful Almindsø.



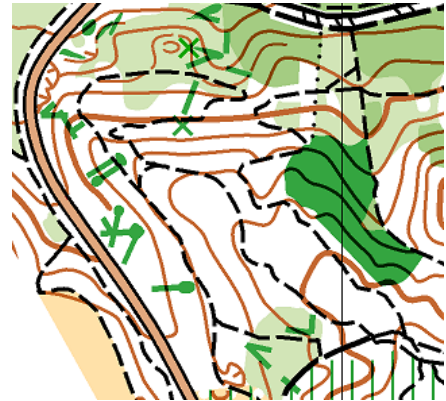
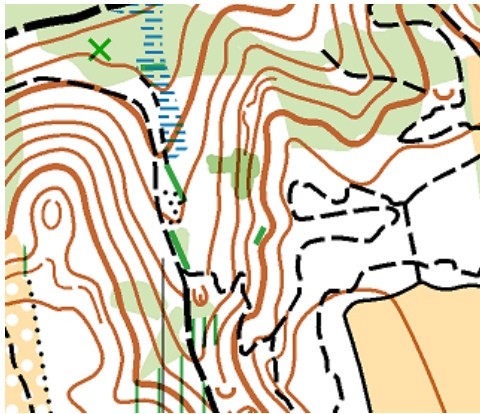
Course	Map scale	Length	Controls
Let - Green	1:7.500	3,9 km	10
Mellemsvær - Yellow	1:10.000	5 km	15
Svær 4 km – Black	1:7.500	3,9 km	13
Svær 5,5 km – Black	1:10.000	5,5 km	14
Svær 7 km – Black	1:10.000	7,0 km	18
Svær 8 km - Black	1:10.000	8,2 km	22

Parking: Park on the roadside (grass) on Horsensvej, close to Østre Søbad (Horsensvej 2, 8600 Silkeborg - <https://goo.gl/maps/Kr9eDSK5Ytv5EFur8>). See parking details.

Start/Finish: Østre Søbad by Almindsø

Wednesday 13th april 2022 – Siim skov, Ry – Countour training

Very hilly forest, almost higher than broad, the perfect terrain to learn how to navigate steep slopes. Middle distance training, where you will have the chance to optimize your technique along and across contour levels before the races on Himmelbjerget. Extensive path system with a lot of mountain bike tracks. Do not forget to enjoy the view over Knudsø from the top of the hills.



Beware of mountainbikers! Look out while running on the narrow paths. If you have to stand still, **move out of the track** so no one gets hurt.

Course	Map scale	Length	Controls	Map change
Let - Green	1:7.500	2,6 km	13	No
Mellemsvær - Yellow	1:7.500	3,2 km	15	Yes
Svær 3 km - Black	1:7.500	3,0 km	12	Yes
Svær 5 km - Black	1:7.500	4,8 km	21	Yes

Parking: Parking spot about 300 m south of Knudhule Badehotel, 8680 Ry (56.100561920512064, 9.784385228149683). See parking details.

Start/Finish: 500 m south of parking – marked on map.

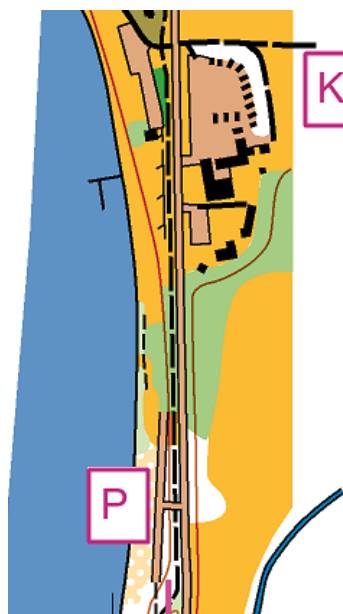
Parking details



Parking Vesterskoven

Park on the roadside (grass) on Horsensvej, close to Østre Søbad (Horsensvej 2, 8600 Silkeborg -

<https://goo.gl/maps/Kr9eDSK5Ytv5EFur8>)



Knudhule Badehotel

Parking Siim Skov

Parking spot about 300 m south of Knudhule Badehotel, 8680 Ry (56.100561920512064, 9.784385228149683)

